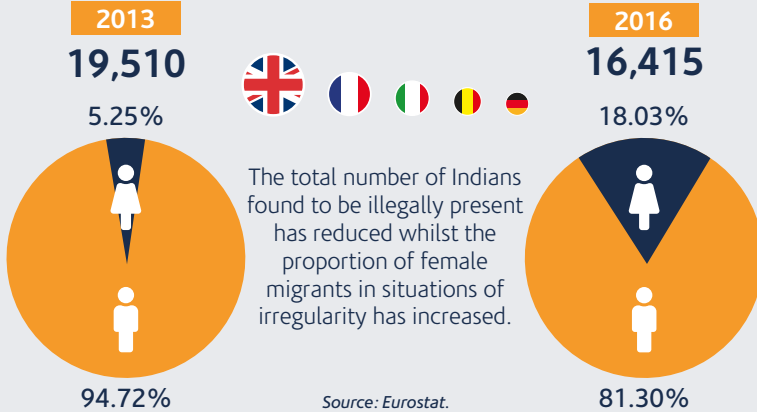


IRREGULAR MIGRATION



ENTRY REFUSALS INTO THE EU



Air borders appear to be the main route through which Indians attempt to illegally migrate to member countries of the EU. The second important route is by sea but in the last two years (2015-2016) land borders have begun to play a more prominent role for irregular migration of Indians within the EU.

TOP 5 COUNTRIES ISSUING ORDERS TO INDIAN NATIONALS TO LEAVE, IN 2017

United Kingdom – 7,765



France – 1,865



Netherlands – 1,845



Germany – 2,355



Belgium – 465



Source: Eurostat.