

SAFEGUARDING MEASURES AT BORDERS



Management of persons in the framework of border surveillance (land/green border) in the context of COVID-19 / sanitary crisis linked to contagious disease

HOW DOES COVID-19 SPREAD?



Respiratory droplets



Physical contact



Touching surfaces

COVID-19 SYMPTOMS



Fever



Shortness of breath



Dry cough



Tiredness

Some persons may have:

- ☒ Aches and pains
- ☒ Nasal congestion
- ☒ Runny nose
- ☒ Sore throat
- ☒ Diarrhea
- ☒ Loss of taste and smell

GENERAL MEASURES FOR SELF-PROTECTION OF OFFICERS

- Wearing PPE (masks, gloves), at least for those in contact with possibly infected individuals
- Hand hygiene (cleaning hands with soap and water or with an alcohol-based hand rub)
- Refrain from touching mouth and nose
- Disinfection of personal equipment and duty vehicle (if/where applicable)
- Keep the distance (min. 1.5 m)

ADDITIONAL MEASURES FOR PROTECTION OF COLLEAGUES OR FAMILIES AFTER THE SHIFT

- Clean or decontaminate your work equipment, including shoes, avoiding the spread of particles/dust
- Take off duty clothes and wash them with laundry soap as soon as feasible
- Handle, transport and wash them in way that limits exposure to skin, eyes, environment and other clean clothes (avoid shaking clothes)
- Take a shower or wash exposed skin with soap and water
- Self-monitor for signs of illness and seek medical advice if you show any symptom

RECOMMENDED PROTECTION, DISINFECTION AND SCREENING AS WELL AS ISOLATION ARRANGEMENTS

Personal Protective Equipment

- Mask (FFP2 type)
- Gloves
- Goggles or visors

For possibly infected persons

- Mask

Disinfection product

- Water, Soap
- Alcoholic hand rub
- Sprays

Screening equipment

- Contact-less thermometer

Isolation of possibly infected persons

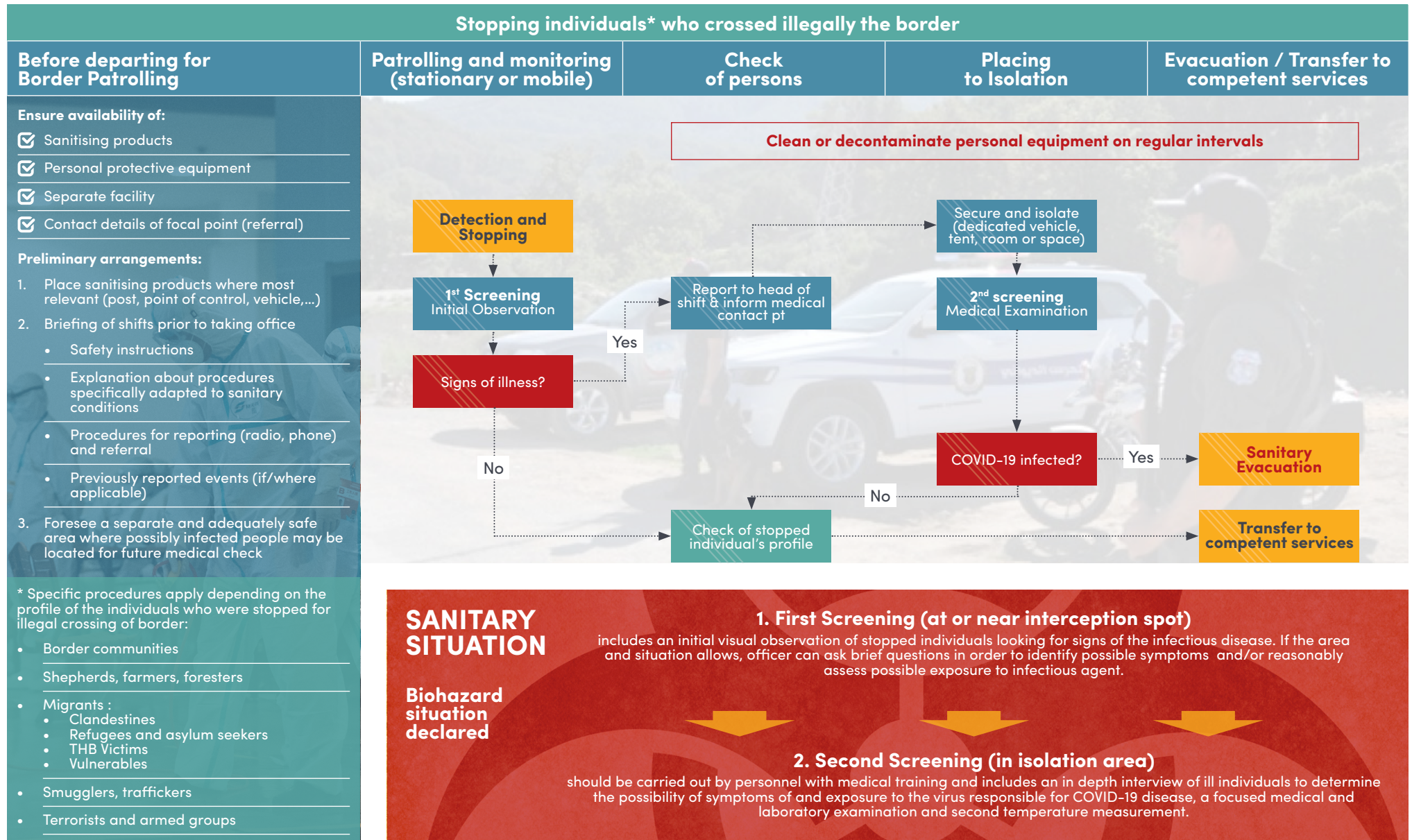
- Separate room
- Separate tent
- Dedicated vehicle

DISCLAIMER:

These guidelines were drafted by Border Management and Security Programme of ICMPD in accordance with international best practices and the WHO recommendations and are not meant to replace national guidelines. All measures taken by national law enforcement authorities should be in conformity with the applicable national legislation and international obligations.

SAFEGUARDING MEASURES AT BORDERS

Workflow description in the context of land border surveillance (green border) Operations carried out by border guard/police, customs or military units



DISCLAIMER:

These guidelines were drafted by Border Management and Security Programme of ICMPD in accordance with international best practices and the WHO recommendations and are not meant to replace national guidelines. All measures taken by national law enforcement authorities should be in conformity with the applicable national legislation and international obligations.