

SAFEGUARDING MEASURES AT BORDERS



Management of persons in the framework of maritime surveillance (blue border) and SAR in the context of COVID-19 / sanitary crisis linked to contagious disease

HOW DOES COVID-19 SPREAD?



Respiratory droplets



Physical contact



Touching surfaces

COVID-19 SYMPTOMS



Fever



Shortness of breath



Dry cough



Tiredness

Some persons may have:

- ☒ Aches and pains
- ☒ Nasal congestion
- ☒ Runny nose
- ☒ Sore throat
- ☒ Diarrhea
- ☒ Loss of taste and smell

GENERAL MEASURES FOR SELF-PROTECTION OF OFFICERS

- Wearing PPE (masks, gloves, coverall), at least for officers in contact with possibly infected individuals
- Hand hygiene (cleaning hands with soap and water or with an alcohol-based hand rub)
- Refrain from touching eyes, mouth and nose
- Disinfection of personal equipment and of the ship's spaces used for hosting third persons (if/where applicable)
- Keep the distance (min. 1.5 m) (if/where applicable)

ADDITIONAL MEASURES FOR PROTECTION OF COLLEAGUES OR FAMILIES AFTER THE SHIFT

- Clean or decontaminate your work equipment, including shoes, avoiding the spread of particles/dust
- Take off duty clothes and wash them with laundry soap as soon as feasible
- Handle, transport and wash them in way that limits exposure to skin, eyes, environment and other clean clothes (avoid shaking clothes)
- Take a shower or wash exposed skin with soap and water
- Self-monitor for signs of illness and seek medical advice if you show any symptom

RECOMMENDED PROTECTION, DISINFECTION AND SCREENING AS WELL AS ISOLATION ARRANGEMENTS

Personal Protective Equipment

- Mask (FFP2 type)
- Gloves
- Goggles or face shield

For possibly infected persons

- Mask
- Body bag

Disinfection product

- Water, Soap
- Alcoholic hand rub
- Sprays

Screening equipment

- Contactless Thermometer
- Thermoscan (onboard larger ships or at least on land) and rapid testing kits

Isolation of possibly infected persons

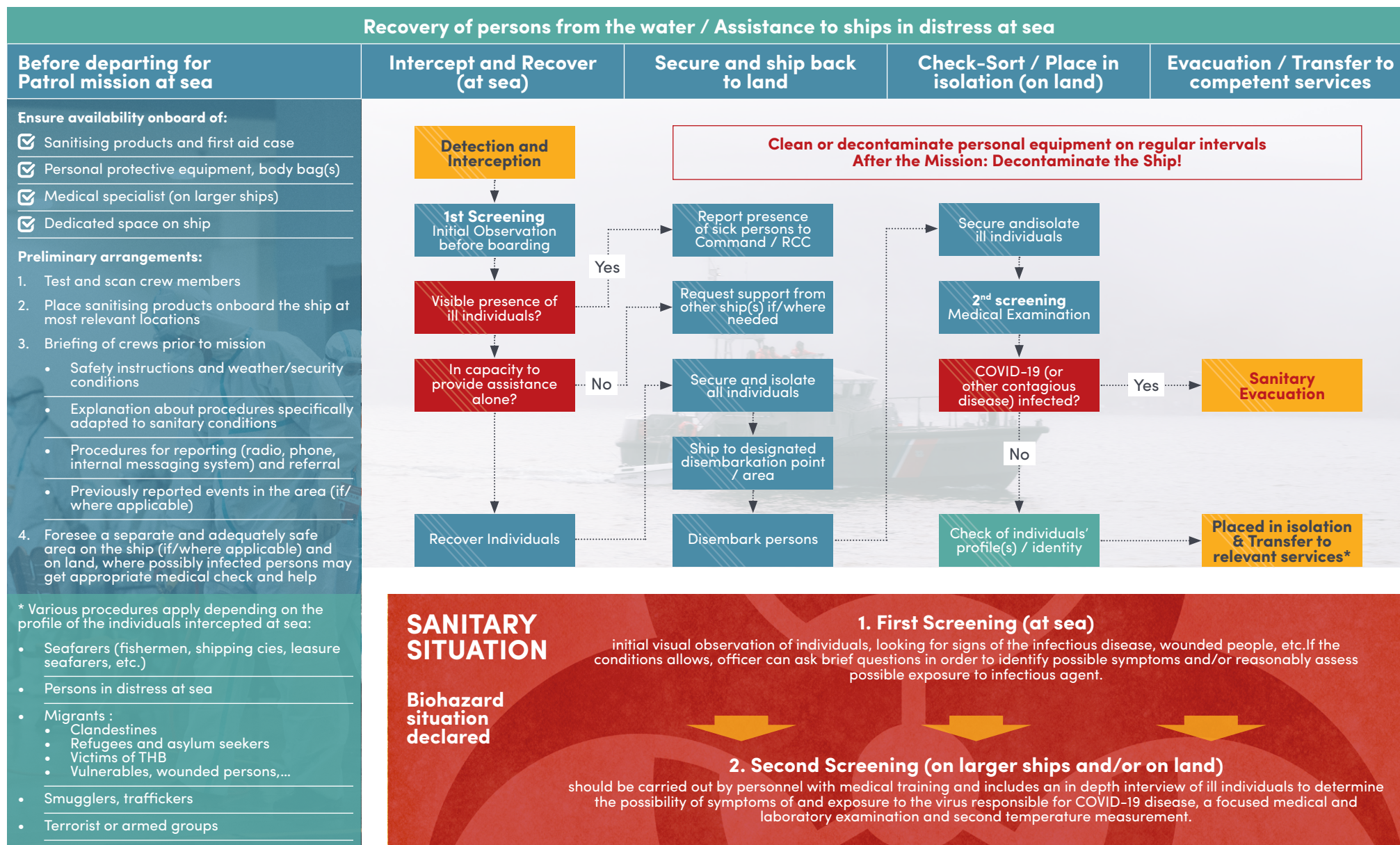
- At sea: separate area (on larger ships)
- On land: separate facility for further screening, medical check and support

DISCLAIMER:

The present guidelines were drafted by Border Management and Security Programme of ICMPD in accordance with international best practices, the WHO and IMO recommendations and guidances and are not meant to replace national guidelines. All measures taken by national law enforcement authorities should be in conformity with the applicable national legislation and international obligations. Measures listed hereby apply very differently depending on the numerous conditions in which operations are carried out, the size and manoeuvrability of the ship, number and profiles of persons being processed, etc. In the framework of their missions, coast guard staff are often exposed to sanitary risks.

SAFEGUARDING MEASURES AT BORDERS

Workflow description in the context of maritime surveillance (blue border / national maritime area) or SAR operation. Tasks carried out by coast guard, navy or maritime customs units



DISCLAIMER:

The present guidelines were drafted by Border Management and Security Programme of ICMPD in accordance with international best practices, the WHO and IMO recommendations and guidances and are not meant to replace national guidelines. All measures taken by national law enforcement authorities should be in conformity with the applicable national legislation and international obligations. Measures listed hereby apply very differently depending on the numerous conditions in which operations are carried out, the size and manoeuvrability of the ship, number and profiles of persons being processed, etc. In the framework of their missions, coast guard staff are often exposed to sanitary risks.