

SAFEGUARDING MEASURES AT BORDERS



Management of travellers at border crossing points in the context of the COVID-19/contagious disease outbreak

HOW DOES COVID-19 SPREAD?



Coughing



Shaking hands



Touching surfaces

COVID-19 SYMPTOMS



Fever



Shortness of breath



Dry cough



Tiredness

Some persons may have:

- ☒ Aches and pains
- ☒ Nasal congestion
- ☒ Runny nose
- ☒ Sore throat
- ☒ Diarrhea
- ☒ Loss of taste and smell

GENERAL MEASURES FOR SELF-PROTECTION OF OFFICERS

- Wearing PPE (masks, gloves),
- Hand hygiene (cleaning hands with soap and water or with an alcohol-based hand rub),
- Refrain from touching mouth and nose,
- Disinfection of work space and equipment,
- Keep the distance (min. 1.5 m)

ADDITIONAL MEASURES FOR PROTECTION OF YOUR FAMILY AND PARTNERS AFTER YOUR SHIFT

- Clean or decontaminate your work equipment, including shoes, avoiding the spread of particles/dust;
- Take off duty clothes and wash them with laundry soap as soon as feasible.
- Handle, transport and wash them in way that limits exposure to skin, eyes, environment and other clean clothes (avoid shaking clothes);
- Take a shower or wash exposed skin with soap and water;
- Self-monitor for signs of illness and seek medical advice if you show any symptom

RECOMMENDED PROTECTION, DISINFECTION AND SCREENING AND ISOLATION ARRANGEMENTS

Personal Protective Equipment

- Mask (FFP2 type)
- Gloves

For possibly infected persons

- Mask

Disinfection product

- Water, Soap
- Alcoholic hand rub
- Sprays

Screening equipment

- Health remote monitoring equipment

Isolation of possibly infected pax

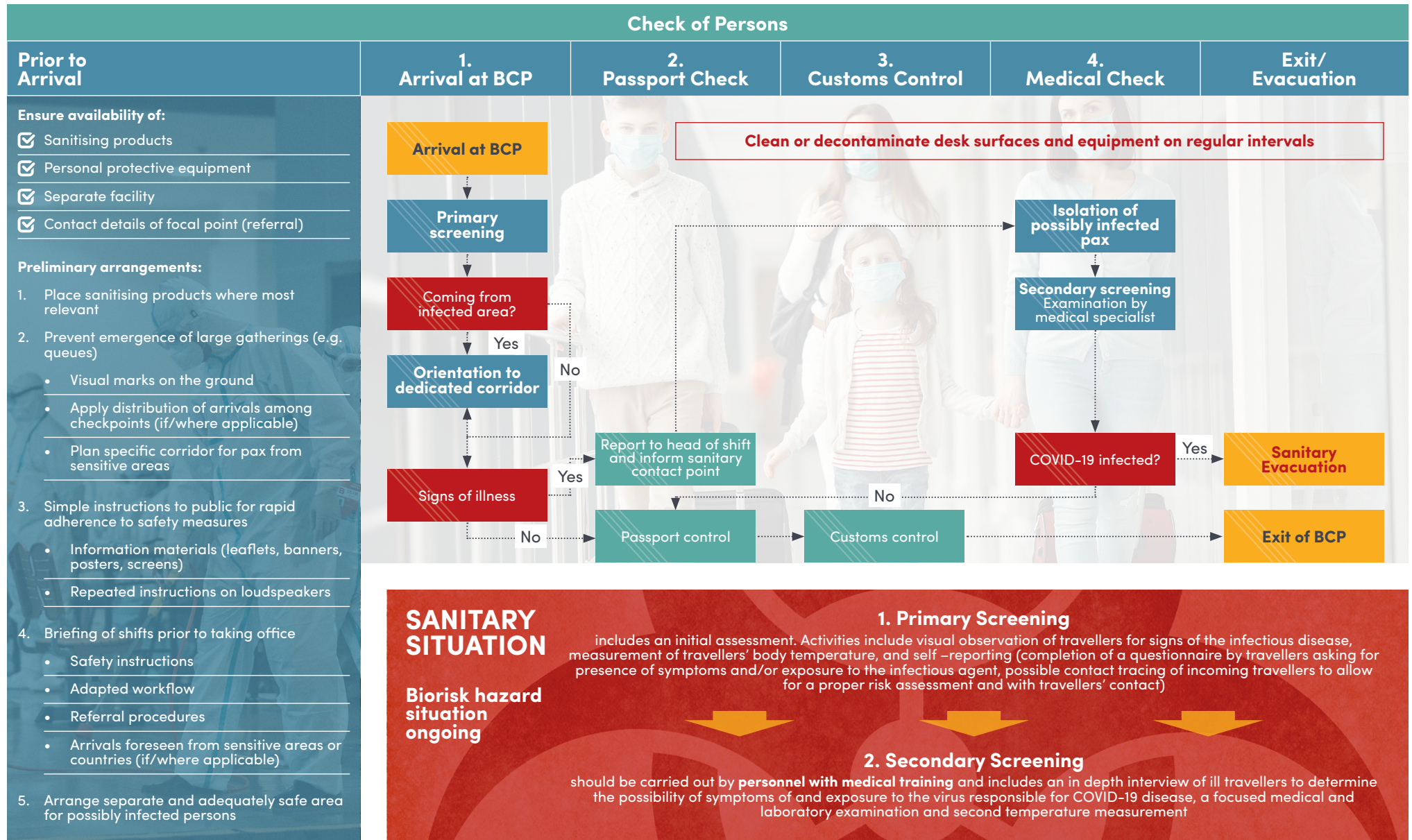
- Separate Room
- Separate Tent

DISCLAIMER:

These guidelines were drafted by Border Management and Security Programme of ICMPD in accordance with international best practices and the WHO recommendations and are not meant to replace national guidelines. All measures taken by national law enforcement authorities should be in conformity with the applicable national legislation and international obligations.

SAFEGUARDING MEASURES AT BORDERS

Workflow description at entry on Border Crossing Point – Air, Blue, Land



DISCLAIMER:

These guidelines were drafted by Border Management and Security Programme of ICMPD in accordance with international best practices and the WHO recommendations and are not meant to replace national guidelines. All measures taken by national law enforcement authorities should be in conformity with the applicable national legislation and international obligations.