



Incubating Skills Partnerships beneficial to Migrants, Countries of Origin and Destination





Overview

Project	Incubating Skills Partnerships beneficial to Migrants, Countries of Origin and Destination (INSPIRE)
Duration	December 2021 ► November 2023
Budget	940 000 EUR
Beneficiary regions	Germany's reform and transformation partners from Africa, the Western Balkans and Eastern Partnership countries
Donor	German Federal Ministry for Economic Cooperation and Development (BMZ)
Implementing agency	International Centre for Migration Policy Development (ICMPD)

Context

Europe and its partner countries require crucial skills for the green and digital transitions. So does the private sector, whose existence and capacity to generate growth depend on the availability of qualified labour and thus represents a critical stakeholder to any skills partnerships.

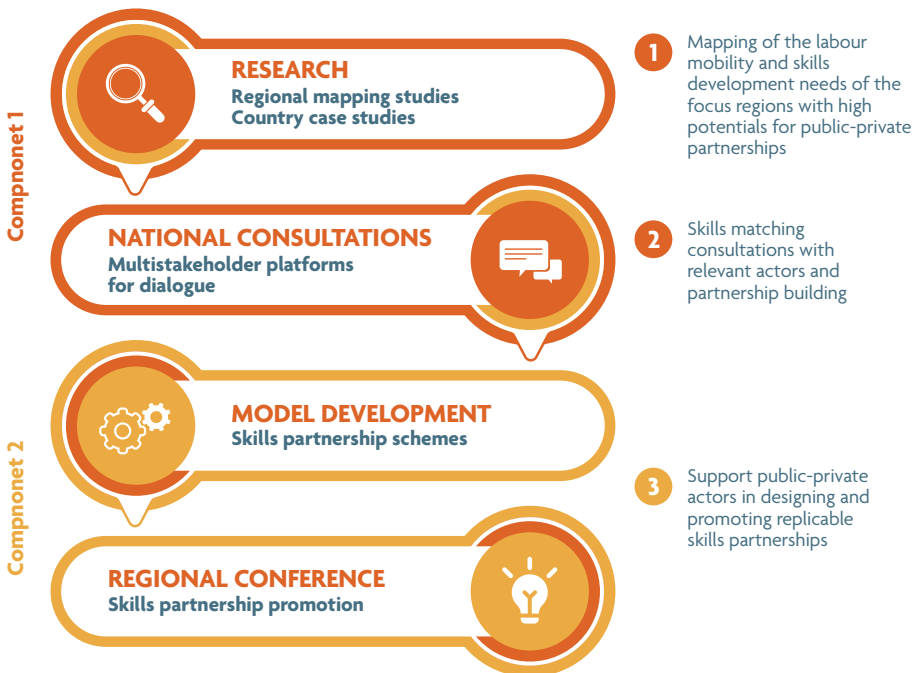
The Inspire project seeks to create a platform for dialogue on skills partnerships designed to engage public and private actors from Europe and partner countries, raise awareness of available cooperation instruments and offer the chance to harness the development potential of the European Union's (EU) Talent Partnerships.

What will the Inspire project do?

The project aims to develop feasible, implementation-ready, partner-endorsed skills partnership models in targeted digital and green industries, which are beneficial to migrants, partner, and EU countries. It will set up and run country-specific multistakeholder platforms for dialogue that can steer, sustain and extend each migration and mobility-based skills partnership established, activated and promoted at the regional level.

How does it work?

The project works on two components with three core clusters of activities involving research, dialogue and project incubation.



Who are the stakeholders?

PUBLIC SECTOR	PRIVATE SECTOR	OTHERS
<ul style="list-style-type: none">• Ministry of Labour and Employment, Ministry of Education, Ministry of Interior, Ministry of Development, sectoral ministries and public employment services	<ul style="list-style-type: none">• European SMEs active in partner countries, EU-based companies interested to invest in the partner countries, local companies• Membership associations such as Chambers, industry groups and business fora	<ul style="list-style-type: none">• Employers' and workers' organisations• TVET institutions• The European Commission• Diaspora associations• Relevant development agencies, international and civil society organisations• Multilateral and regional development banks



Inspire Project

ICMPD

Gonzagagasse 1, 1010 Vienna,
Austria

<https://www.icmpd.org/our-work/projects/inspire>